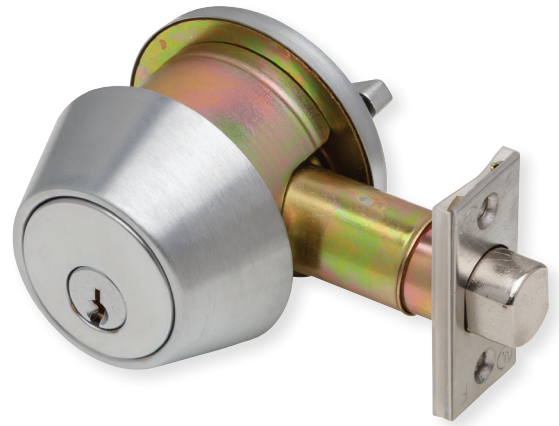


# DB2000 Series

## Grade 2 deadbolt



### Specifications

- Grade 2, UL listed 3 hour, 1 <sup>3</sup>/<sub>8</sub>" – 1 <sup>3</sup>/<sub>4</sub>" standard cylinder door range; 1 <sup>5</sup>/<sub>8</sub>" - 2" SFIC door range
- All functions include 2 <sup>3</sup>/<sub>8</sub>" - 2 <sup>3</sup>/<sub>4</sub>" universal square corner latch (p/n 30-253), 1 <sup>1</sup>/<sub>8</sub>" x 2 <sup>3</sup>/<sub>4</sub>" square corner lipless strike
- Schlage C cylinders are 6-pin cylinders keyed 6, keyed different
- Accommodates SFIC to accept 6-pin/7-pin

### Deadbolts

Product description	Function	Finish	Cylinder
DB2000-SCT-626-KDC	Single Cylinder x Turn	626	6-pin, Schlage C, KD
DB2000-SCT-613-KDC	Single Cylinder x Turn	613	6-pin, Schlage C, KD
DB2000-SCT-605-KDC	Single Cylinder X Turn	605	6-pin, Schlage C, KD
DB2000-SCT-626-SFIC	Single Cylinder x Turn	626	Less SFIC
DB2000-SCT-613-SFIC	Single Cylinder x Turn	613	Less SFIC
DB2000-SCT-605-SFIC	Single Cylinder X Turn	605	Less SFIC
DB2000-DCT-626-KDC	Double Cylinder	626	6-pin, Schlage C, KD
DB2000-DCT-613-KDC	Double Cylinder	613	6-pin, Schlage C, KD
DB2000-DCT-605-KDC	Double Cylinder	605	6-pin, Schlage C, KD
DB2000-DCT-626-SFIC	Double Cylinder	626	Less SFIC
DB2000-DCT-613-SFIC	Double Cylinder	613	Less SFIC
DB2000-DCT-605-SFIC	Double Cylinder	605	Less SFIC

### Tailpieces:

Product description	Function	Finish	Cylinder
DB2000-TP-SFIC	SFIC Tailpiece kit including fork for G2 DB	N/A	N/A
DB2000-TP	SFIC Tailpiece for G2 DB	N/A	N/A

### Finishes



605



613



626